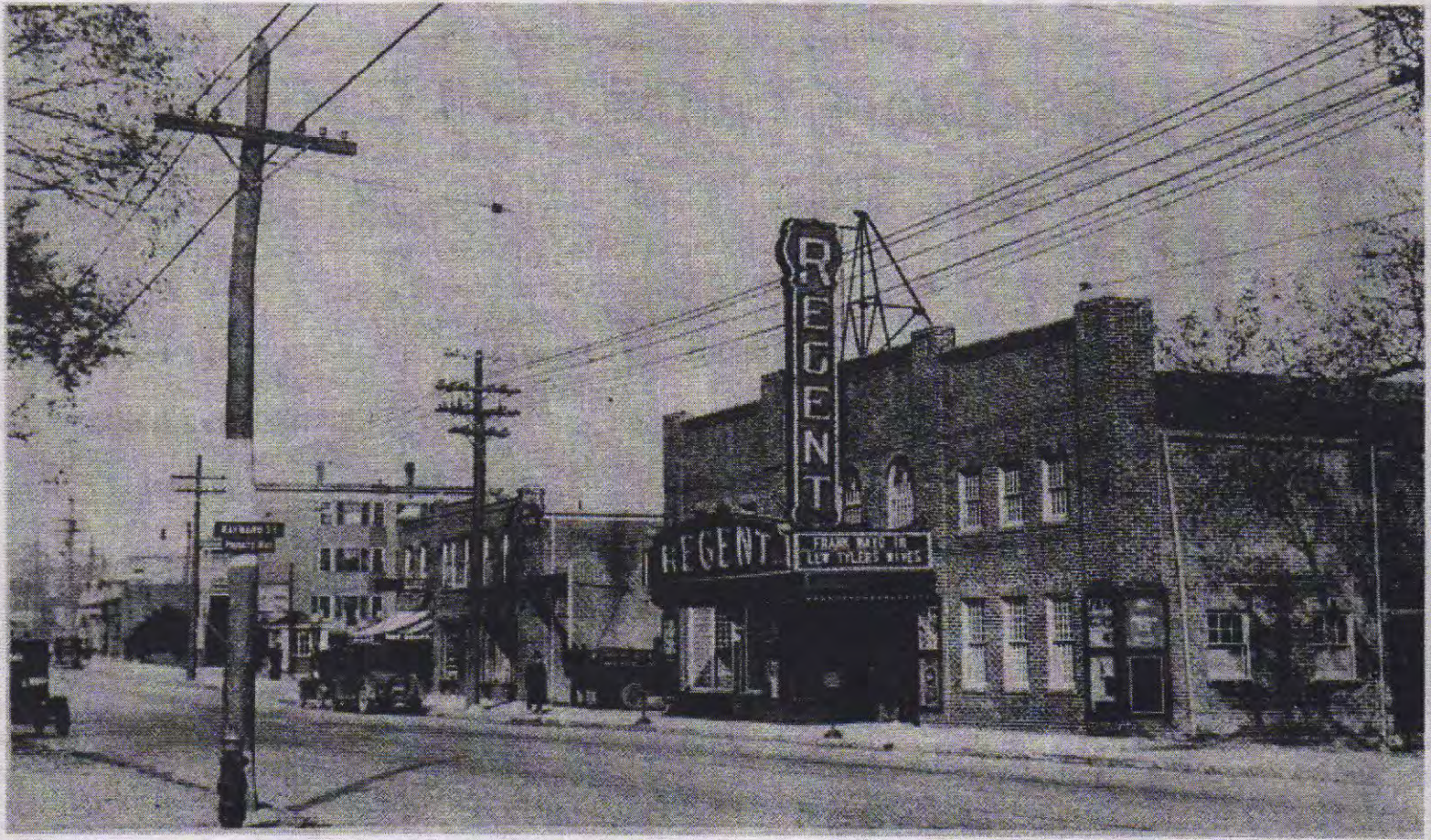


# Scenes From Yesterday



**THIS IS A 1927 postcard view of Hancock Street in Norfolk Downs looking north from the end of Hayward Street at the Wheelhouse Diner. The newly built Regent Theater had 800 seats and remained open for over 50 years. For many years, the owners of the Regent also owned the Wollaston Theater on Beale Street. The old theater building has since been replaced with another building now home to a branch of the Bank of America with offices upstairs. The Regent building also had offices upstairs that were home to two start-up companies in the 1950s: Instron Engineering, now a worldwide company located in Norwood; and Industrial**

**Cafeteria's and Menu-Mat, both owned by Bill Rosenberg who also started his Dunkin Donuts company here. That is now located in Canton. The next building to the left was owned by the Boston Gear Works for many years, but is now a parking lot for the bank. A few years before this picture was taken, Charlie Rizzo opened his barbershop on the first floor of the triple-decker in the distance. He was in business there for 50 years. To contact Tom Galvin, e-mail [tmgalvin@verizon.net](mailto:tmgalvin@verizon.net).**

*From the Collection of Tom Galvin*